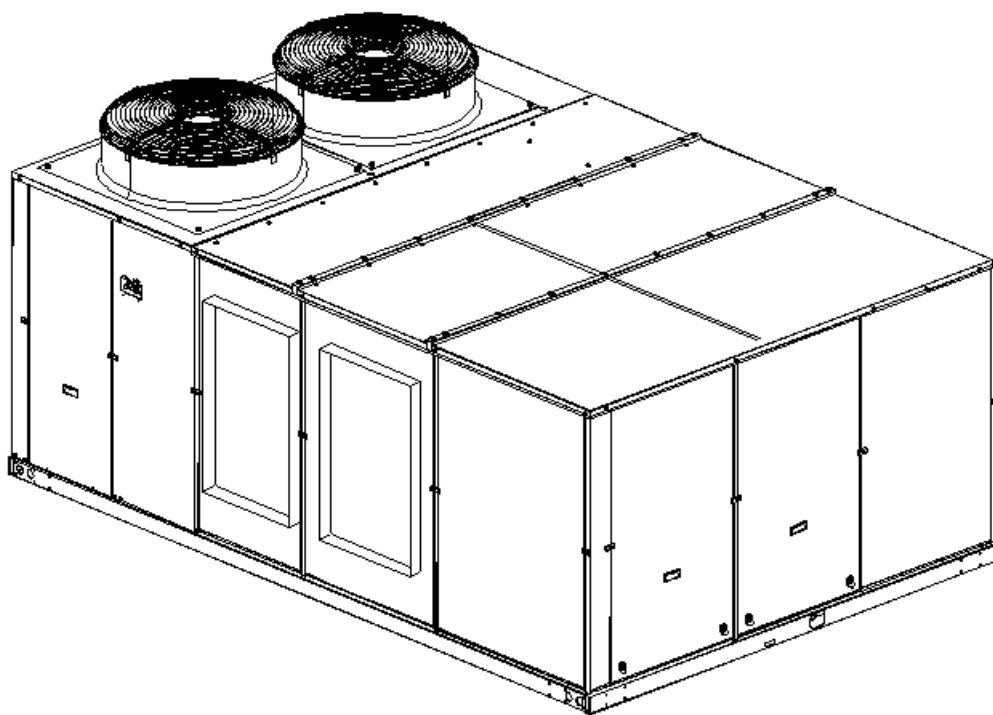




BY JOHNSON CONTROLS

## Panels with flanges for side ducts in ROOF TOP ACTIVA 045-090



Options and Accessories, Installation manual

Ref.: N-40324\_EN 0809



## Index

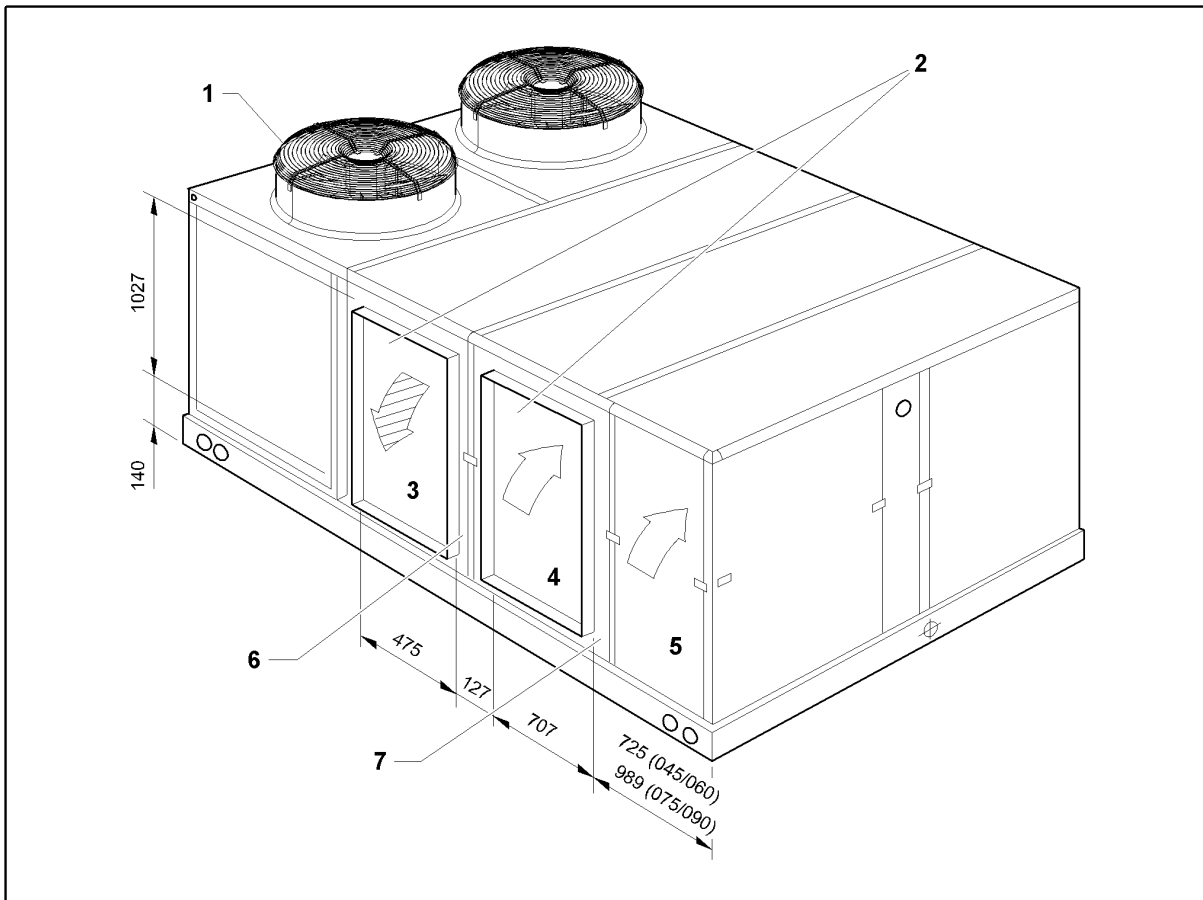
|     |                                                                    |   |
|-----|--------------------------------------------------------------------|---|
| 1   | Panels with flanges for side ducts in ROOF TOP ACTIVA 045-090..... | 1 |
| 1.1 | Assembly.....                                                      | 2 |
| 1.2 | General Information.....                                           | 2 |
| 1.3 | Installation.....                                                  | 2 |

1

---

**Panels with flanges for side ducts in  
ROOF TOP ACTIVA 045-090**

## 1.1 Assembly



- |                                                      |                      |
|------------------------------------------------------|----------------------|
| 1. Condenser section                                 | 5. Outdoor air       |
| 2. Panels to be replaced by the accessory kit panels | 6. Supply air access |
| 3. Supply air                                        | 7. Return air access |
| 4. Return air                                        |                      |

## 1.2 General Information

This consists of two panels required for connecting the side, supply and/or return ducts on the unit. Both panels have 24 mm high flanges. The dimensions of the connection are indicated in the diagram.

## 1.3 Installation

- 1 Replace the side panels of the original supply and/or return air compartments in the unit with the panels supplied in the kit.



### CAUTION

*To ensure the seal of the panels, make sure all screws are fitted with their O-ring (located between the supporting inside of the panel and the base of the unit).*

- 2 Connect the ducts to the flanges on the panels to ensure a sealed connection.

Data and measurements subject to changes without prior notice.